

DataConnect for Action X

The Data You Need – When and Where You Need It

Key Benefits

Expand the value of Ingres applications

Integrate data from wide range of files and databases

Connect to applications inside and outside of your enterprise

Support for SQL operations

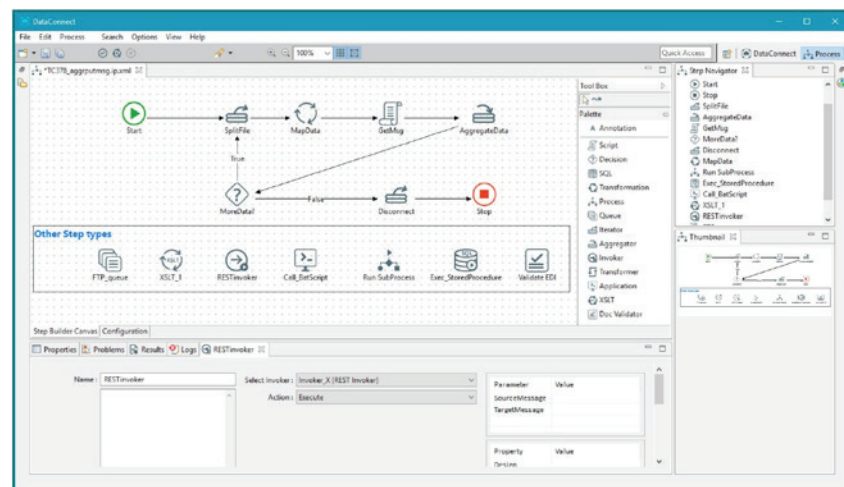
Eliminate the maintenance risk of custom code

On-premise, hybrid, and cloud

DataConnect for Action X provides an end-to-end solution for designing and deploying data integration with your Action X and Ingres applications. It provides an integrated development environment (IDE) for connecting to data sources and targets, creating mappings and transformations, defining data workflows as automated integration processes.

DataConnect for Action X features include:

- Rich desktop IDE with visual workflow design, drag-and-drop mapper and schema editor
- Ability to create interchangeable and reusable artifacts
- Connectors to a wide range of file and database types
- On-premise, hybrid, and cloud-to-cloud integration
- Simple versioning system and open repository for easy integration with 3rd party source control



DataConnect for Action X process workflow lets you call maps and numerous other step types

Getting Past Custom Integration Code

Many developers get started with application integration by writing custom code – typically a one-off development effort to meet a single business requirement. The upfront benefits seem compelling: short start time, no new development tools, simple deployment. As integration requirements grow, problems with custom code begin to mount – inability to reuse, difficult to maintain (either poor/no documentation and original developer no longer available), not scalable or extensible. DataConnect for Actian X enables an organized approach to incrementally add data integration features to existing Ingres applications: pre-built connectors, visual integration process development and mapping of source and targets, and a reusable library of fully tested integrations.

Activate Your Data Across the Enterprise

Expand the value of your Actian X and Ingres applications by connecting it to data and applications inside and outside of your business. Some examples could include:

- Share payment history with sales and front office staff
- Automatically deliver customer record changes to the master CRM system
- Extract and aggregate point of sale data into an executive report

Use DataConnect for Actian X to centrally manage connecting your Actian X and Ingres application to other data sources. Manage flat file imports, share data with message queues, define and deploy integrations with other applications – all without custom code. Improve productivity so IT can focus on mission-critical projects. Your end users can be more efficient

Included with DataConnect for Actian X

- Design and Management Tools - Desktop IDE, visual designer, drag-and-drop mapper, execution profiler
- Connectors – DataConnect for Actian X can access and deliver data for a large range of flat files and databases
- Integration Process Engine – 1 runtime engine with 3 concurrent users
- Samples and Tutorials – Ingres specific integration samples to help you get started

Actian DataConnect

When you're ready to expand your integration capabilities, Actian DataConnect delivers additional sophisticated, highly scalable data integration and profiling capabilities that excel in the most demanding data environments. With Actian DataConnect you can integrate, synch, or standardize your data using application connectors to applications on premise or in the cloud, while continuing to leverage data quality in every facet of your business.

- Connect to any endpoint – on-premise, hybrid, or cloud
- Manage and run multiple integrations concurrently
- Expanded deployment options – DataCloud, DataConnect Server, SDK/CLI, Docker Ecosystem



www.actian.com | Toll Free +1 888 446 4737 | Tel +1 650 587 5500
2300 Geng Rd., Suite 150, Palo Alto, CA 94303



© 2017 Actian Corporation. Actian is a trademark of Actian Corporation and its subsidiaries. All other trademarks, trade names, service marks, and logos referenced herein belong to their respective companies. (DS38-0417)