

# Actian DataConnect

The Right Data – When You Need It, Where You Need It

## Benefits

Increase design time performance and quickly build integrations

Quickly adapt to changes and reduce mean time to repair

Design once, deploy anywhere – cloud, on-premise, hybrid

Ensure security, compliance and governance

Reduce costs with a simple, flexible architecture

Connect to every part of your business and endpoints, including SaaS and on-premise

As the digital enterprise expands, its impact on integration requirements has been profound. An explosion of endpoints, from cloud and mobile applications to B2B and IoT, are each generating data that need to be integrated and analyzed at the speed of business. And unlike traditional endpoints that remain relatively static, these modern endpoints are dynamic and constantly changing. All these factors demand an integration solution that is easy and quick to implement, execute, and manage.

With its emphasis on reuse and adaptability, Actian DataConnect is engineered to help you cost-effectively integrate diverse data and applications from numerous endpoints with speed and agility.

## Improve time-to-value by quickly building integrations

Actian DataConnect increases design time performance with a powerful, visual interface that lets you quickly design once and deploy anywhere – on premises, in the cloud, or in a hybrid environment. Its fully-templated system empowers business users to modify the integration and run it in production.

- Scale quickly and complete similar integrations in mere hours using reusable templates
- Visually create or modify integration maps, artifacts, rules and job schedules in minutes, without coding or scripting
- Empower business users to integrate through a simple three-step process using pre-packaged apps, maps and data services
- Turn multi-step integration processes into a single, automated task using a drag-and-drop graphical interface
- Define job schedules and event-based processes for cloud deployments
- Automate complex business processes with orchestration invoker like setup, configuration, and debugging tasks

## Reduce mean time to repair by rapidly adapting to changes

Integrations are guaranteed to break—and often—given the number of changes that businesses make to their solution environment. DataConnect Integration Manager is a new browser-based, user interface that allows operations and support staff to easily configure, schedule, execute, and monitor all deployed integrations from a single location that enables quick remediation upon integration errors.

- Be proactively alerted when an integration/connection breaks and monitor jobs and execution status via cloud-based dashboard
- Deploy changes more efficiently with easy-to-use IDE and reusable template configurations

## What's new in version 11:

### Architecture

Lightweight desktop design interface built on a widely-adopted extensible open source IDE framework

Ability to import rather than migrate integration artifacts from prior DataConnect versions

Full support for Data Integrator Version 9 Events and Actions for backward compatibility

Open, file system-based metadata repository enables use of your existing source control systems

Flexible software development kit (SDK) and command line interface (CLI) to support your custom job management infrastructure

Intuitive, browser-based Integration Manager to facilitate configuration, monitoring, scheduling and user access

DataCloud deployment option: Manage in the cloud, runtime on premise via agents

### Integration Features

API Invoker 3.0: Easy-to-use and standardized approach to RESTful and SOAP web service APIs

Engine execution profiler provides immediate, interactive performance feedback

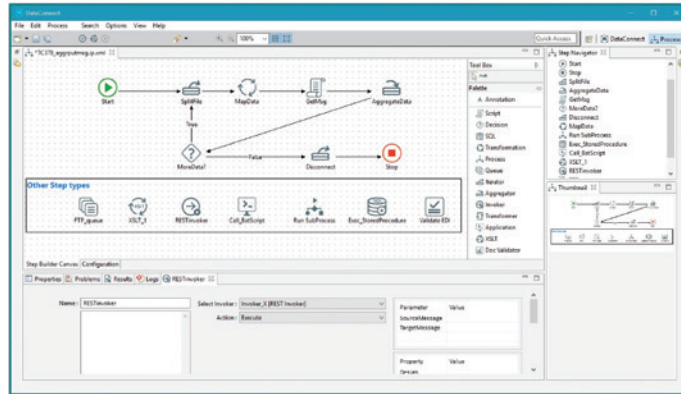
Built-in JSON, XML, and Text editors enable power-users to modify metadata artifacts directly

Content assist in the script editor (aka code completion)

Reject connection tab for improved ease-of-use

Macro enhancements: support for macro sets and encrypted values

Improved "Search and Replace" functionality and Help system



Call maps and other step types from the process workflow tool

## Enjoy enterprise-grade integration with lightweight simplicity

DataConnect improves the user experience and eases the administrative burden with a simplified architecture and design. Extremely easy to administer, learn and maintain, DataConnect has been delivering enterprise-class sophistication for over a decade without the complexity.

- Use a lightweight, desktop IDE built on Eclipse framework for mapping, debugging, web services connectivity, and other design and runtime services
- Be productive in hours—extremely short learning curves for both power users and business users
- Enjoy the same, consistent design experience for on-prem and cloud deployments
- Quickly execute your integration tasks with powerful file parsing

## Securely connect to all endpoints

DataConnect embraces the complexity that exists across the entire enterprise and across multiple enterprises, and can securely connect to any number of sources and targets.

- Securely connect to cloud and on-prem applications and data, mobile, IoT, big data and traditional endpoints, and APIs/traditional data sources using current protocol standards such as TLS 1.2
- Quickly build custom connections to emerging endpoints using a graphical API toolset

## Deploy with no limits

DataConnect works with any data volume, data type, complexity of transformations—and is deployable on different topologies.

- Deploy anywhere – Cloud, on-premises, or in a hybrid environment
- Integrate, migrate, synch, validate, standardize, or enrich your data
- Automate integration using industry-standard APIs



www.actian.com | Toll Free +1 888 446 4737 | Tel +1 650 587 5500  
2300 Geng Rd., Suite 150, Palo Alto, CA 94303

© 2018 Actian Corporation. Actian is a trademark of Actian Corporation and its subsidiaries. All other trademarks, trade names, service marks, and logos referenced herein belong to their respective companies. (DS04-0918)

